

Entrepreneurial Development

The RAIZCORP Model

By: Darryl Wolfaardt



www.raizcorp.co.za

The Real Situation

- Not Everyone is an Entrepreneur
 - Only 5.29%(GEM Report 2006)
- Not every Entrepreneur is Successful
 - 96%of businesses will fail in 10 years
- Not every Business is an Entrepreneurial Business
 - Self Employed Vs Entrepreneurial

www.raizcorp.co.za



Effects of a Shotgun Approach

- Failure rates are extremely high
- Funds are effectively wasted
- An already low self Esteem is impacted negatively
- Black Listing by Banks etc
- Debt Trap (increased overheads)

www.raizcorp.co.za



The Story of Business Incubators

www.raizcorp.co.za

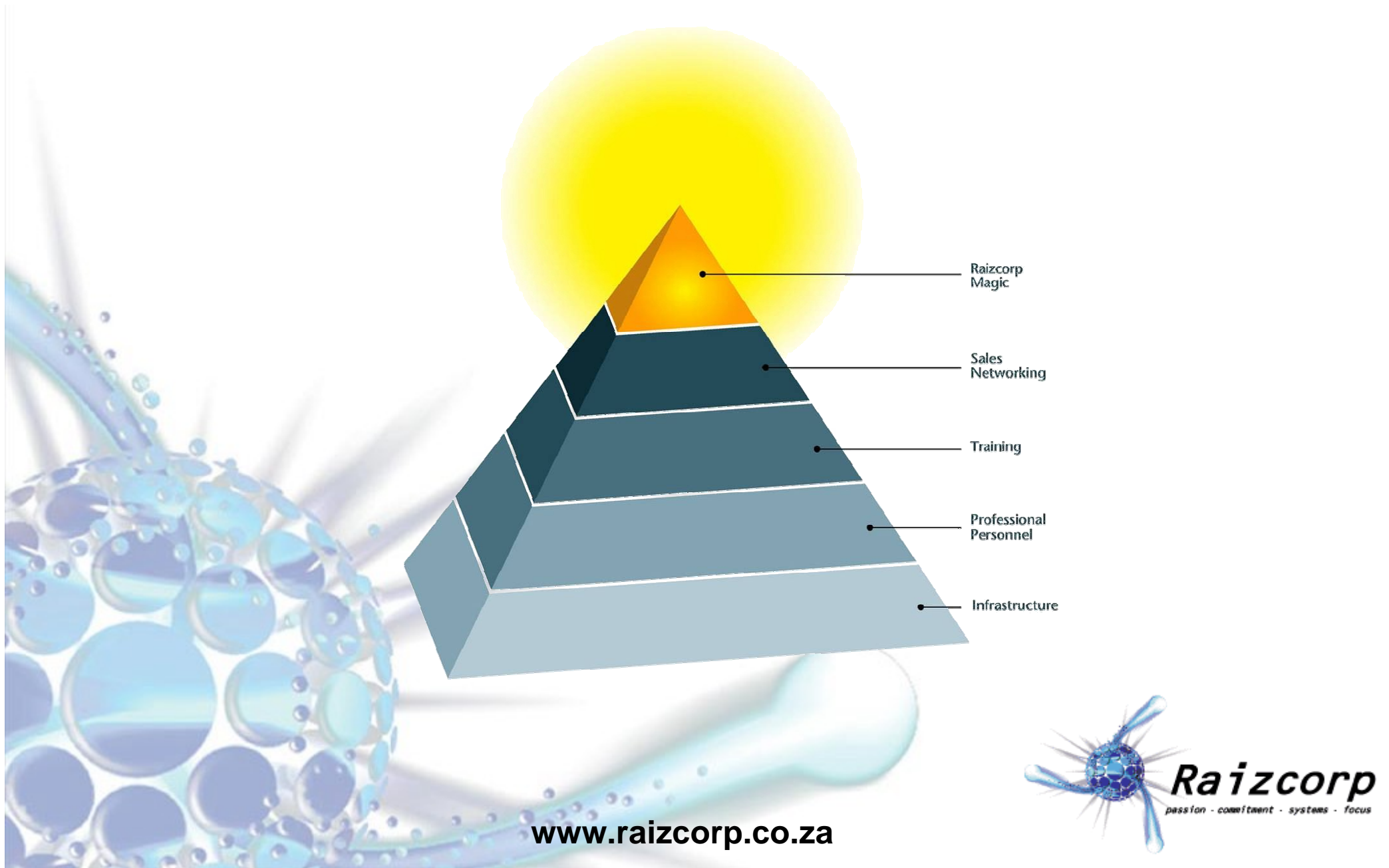


The RAIZCORP Story

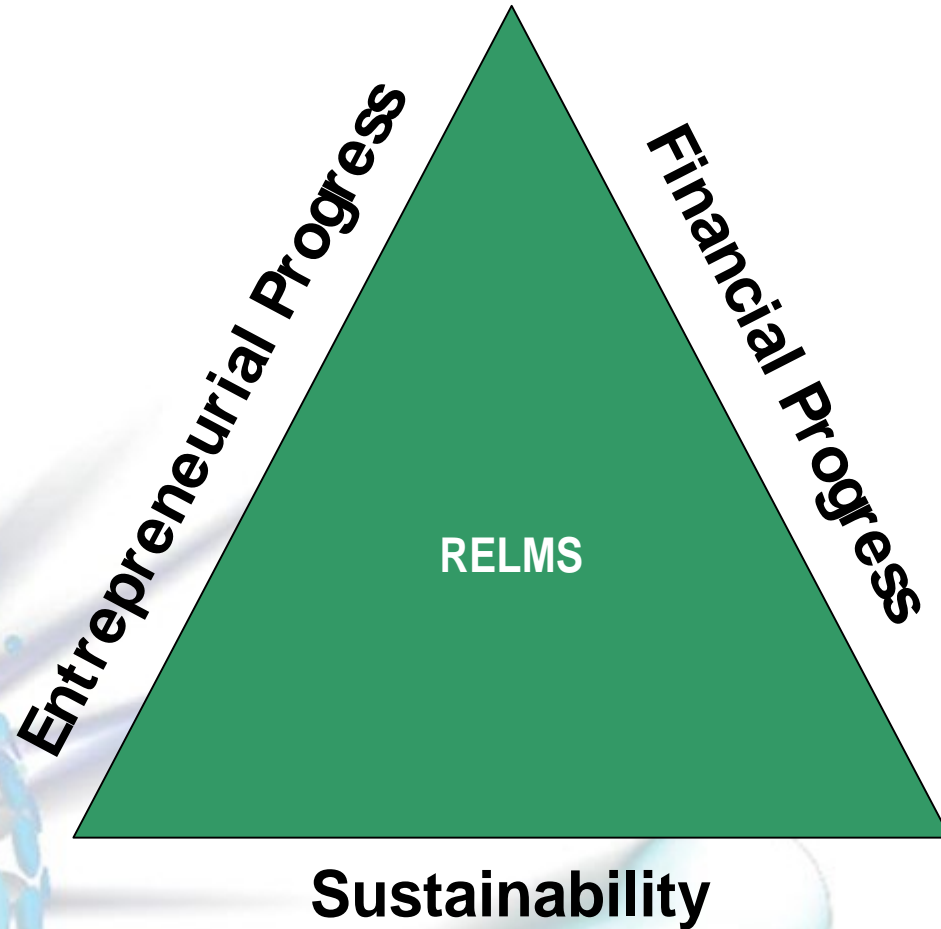
www.raizcorp.co.za



Creating the Model Components



Raizcorp Entrepreneurial Lifecycle Measurements



www.raizcorp.co.za



Creating the Empirics

- **Financial Progress**

- Profitability
- Growth %
- NAV
- Cars

- **Entrepreneurial Progress**

- Personal Development
- Employees (With a view to self sustainability)
- Product Development

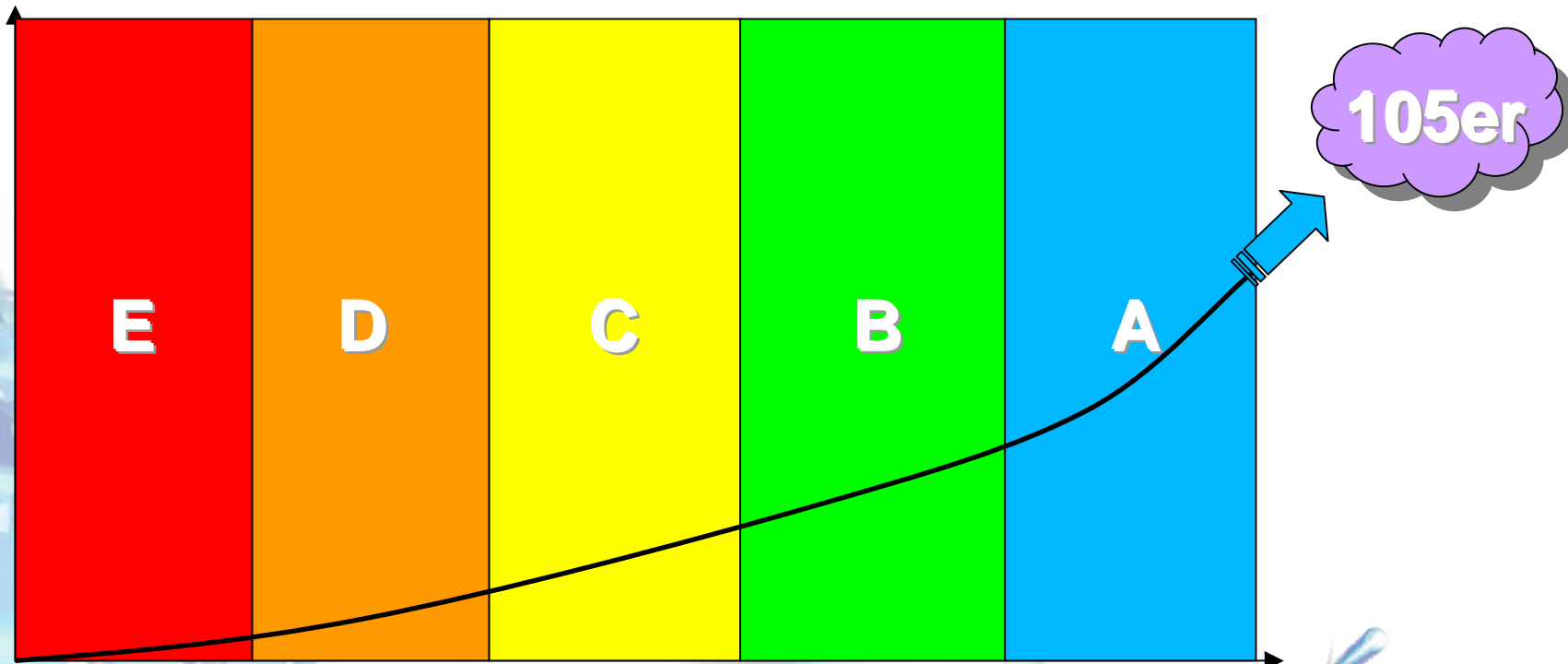
- **Sustainability**

- Systems
- Procedures

www.raizcorp.co.za



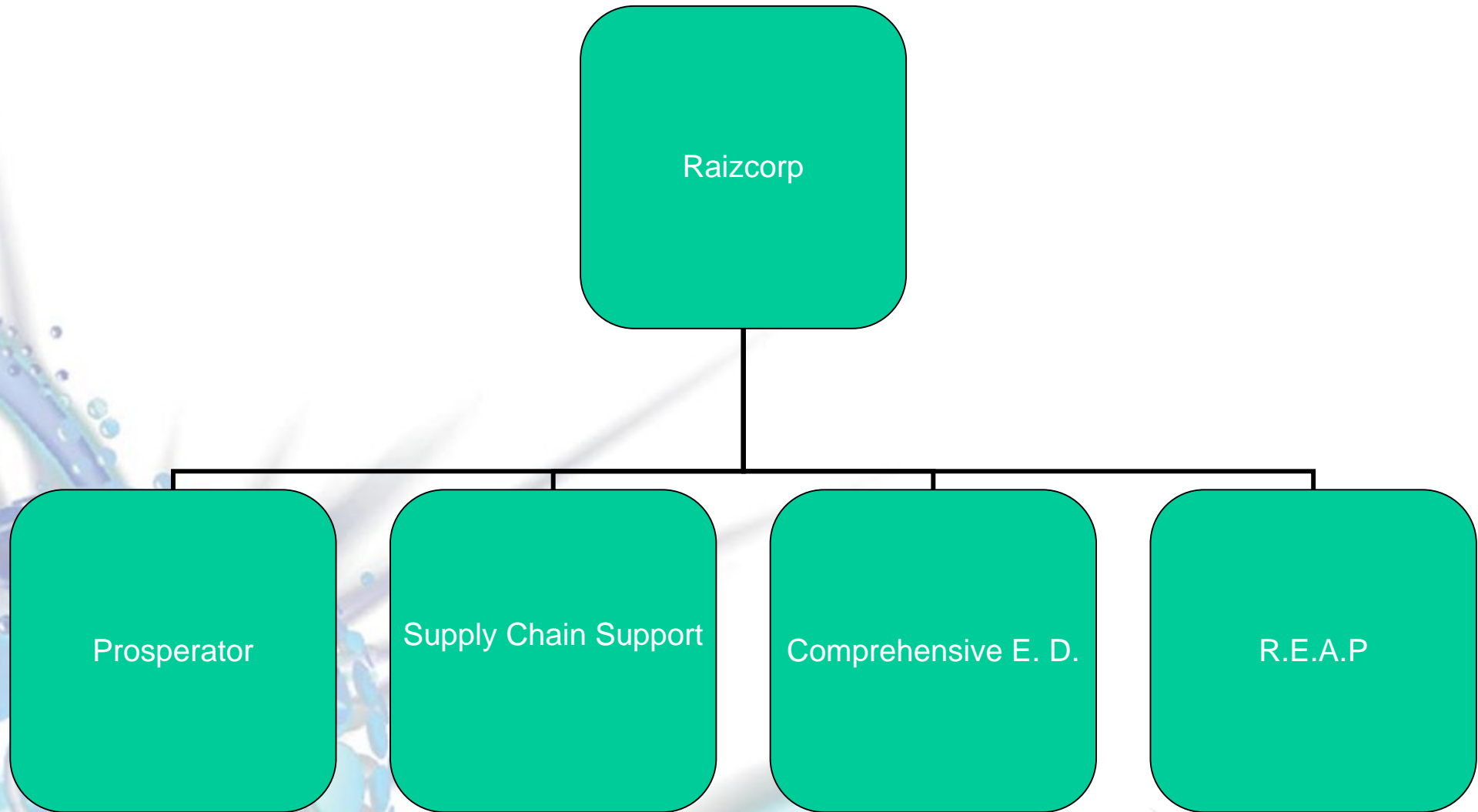
The Categories



www.raizcorp.co.za



RAIZCORP Extended Model



www.raizcorp.co.za



This document was created with Win2PDF available at <http://www.win2pdf.com>.
The unregistered version of Win2PDF is for evaluation or non-commercial use only.